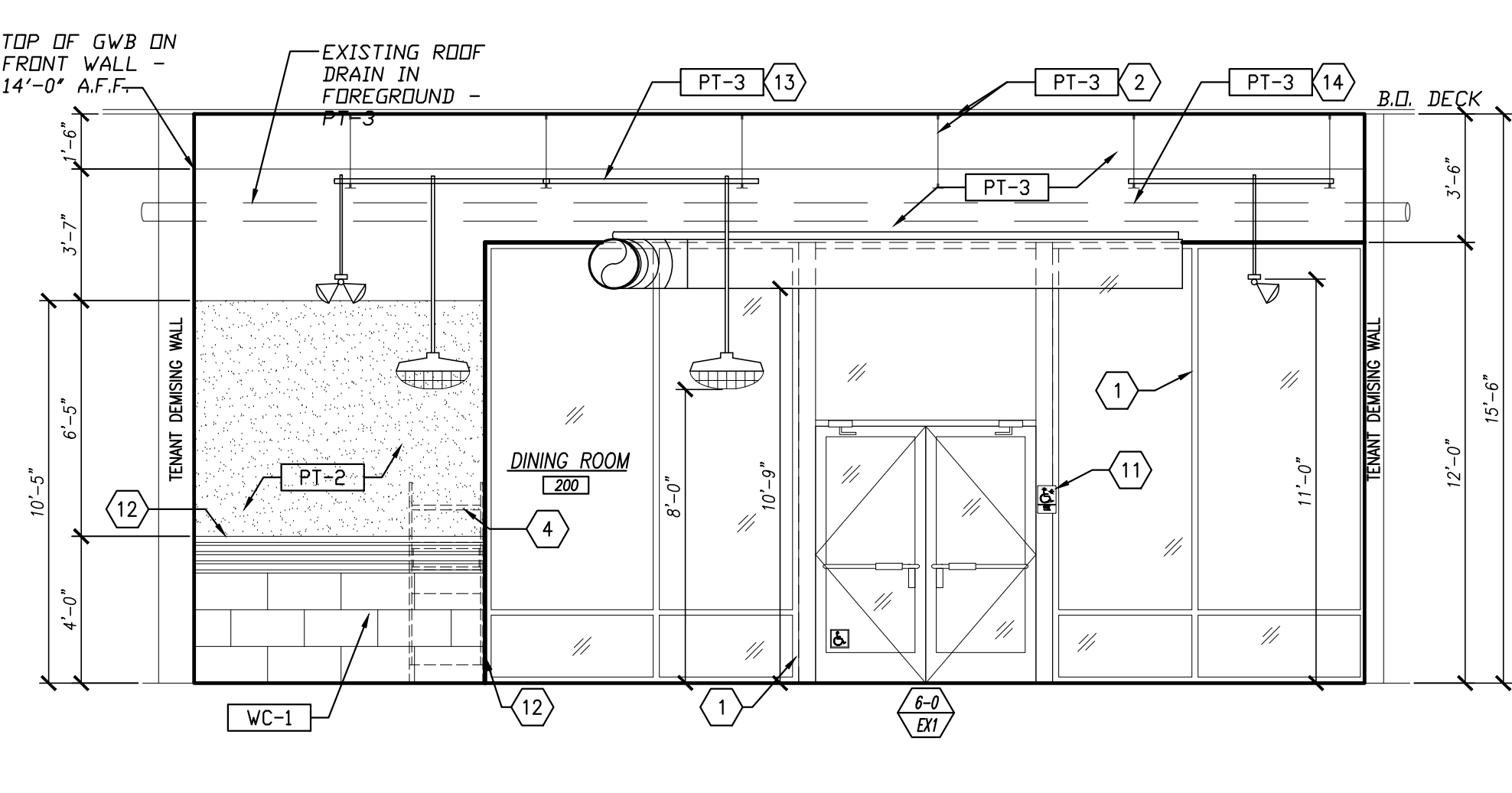


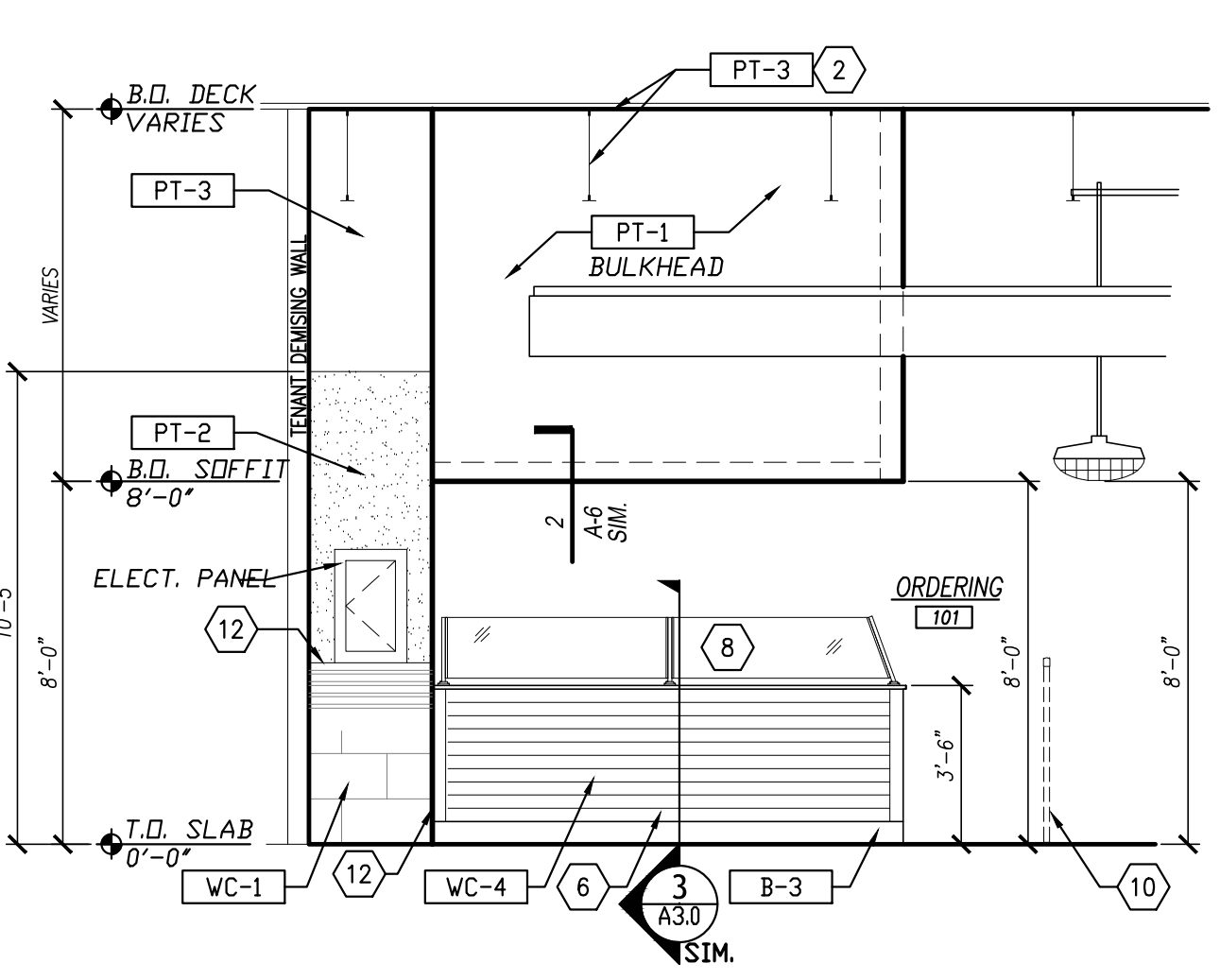
FINISH SCHEDULE									
ROOM NO.	ROOM NAME	FLOOR	BASE	WALL MATERIAL	WALL FINISH	WAINSCOT	CEILING	CEILING HGT.	REMARKS
100	ENTRANCE	F-1	-	GWB, PTD	PT-1	WC-1	EXP	15'-8" - 16'-6"	NOTE 1, 2, 3
101	ORDERING	F-1	B-1	GWB	PT-3	WC-4	EXP	15'-8" - 16'-6"	NOTE 1, 2, 3
102	DINING ROOM	F-1	-	GWB, PTD	PT-1, PT-2	WC-1	EXP	15'-8" - 16'-6"	NOTE 1, 2, 3
103	BEVERAGE	F-1	B-1	GWB, FRP	WC-3	-	GWB	15'-8" - 16'-6"	NOTE 1, 2, 3
104	CORRIDOR	F-1	-	GWB, PTD	PT-2, PT-3	WC-1	ACT	8'-0"	NOTE 1, 2, 3
105	MEN'S	F-1	B-2	GWB, PTD	PT-1	WC-1	ACT	9'-0"	NOTE 1, 2, 3
106	WOMEN'S	F-1	B-2	GWB, PTD	PT-1	WC-1	ACT	9'-0"	NOTE 1, 2, 3
107	SERVICE	F-2	B-1	GWB, SS	WC-2	-	-	8'-5"	NOTE 1, 2, 3
108	KITCHEN	F-2	B-1	GWB, PTD	WC-3	-	-	10'-5"	NOTE 1, 2, 3
109	COOLER	F-2	B-1	GWB, PTD	WC-3	-	-	-	NOTE 1, 2, 3
110	PATIO	F-3	-	-	-	-	-	-	-

FINISH COLOR SCHEDULE, NOTES & ABBREVIATIONS	
<b>MATERIAL ABBREVIATIONS</b>	<b>NOTES</b>
ACT - ACOUSTIC CEILING TILE (VINYL FACED)	1. ALL INTERIOR FINISHES TO COMPLY WITH TABLE 803.9 NCSC FOR A-2 OCCUPANCY.
CB - CONCRETE-BRUSHED	2. PROVIDE TRANSITION STRIPS AT DIFFERING FLOOR FINISHES APPROPRIATE TO THE FINISHES.
CC - CORNER GUARD	3. EXPOSED STRUCTURE AND EXPOSED MECHANICAL "METAL DUCT" TO BE PAINTED. SEE FINISH SCHEDULE AND INTERIOR ELEVATIONS.
CSP - CONCRETE-SEALED-POLISHED	4. ALL ACOUSTICAL CEILING TILE TO BE VINYL FACED WASHABLE.
EXP - EXPOSED STRUCTURE	5. SEE SHEET A-1 FOR FLOOR FINISHES.
FRP - FIBERGLASS REINFORCED PANEL	
GWB - GYPSUM WALLBOARD	
GWBW - MOISTURE RESISTANT GYP. WALLBRD.	
QTB - QUARRY TILE BASE	
PTD - PAINT	
RB - RUBBER BASE	
SPEC. - SEE SPECIFICATIONS	
SS - STAINLESS STEEL	
SSM - SOLID SURFACE MATERIAL	
SM - WALL COVERING (AS SPECIFIED)	

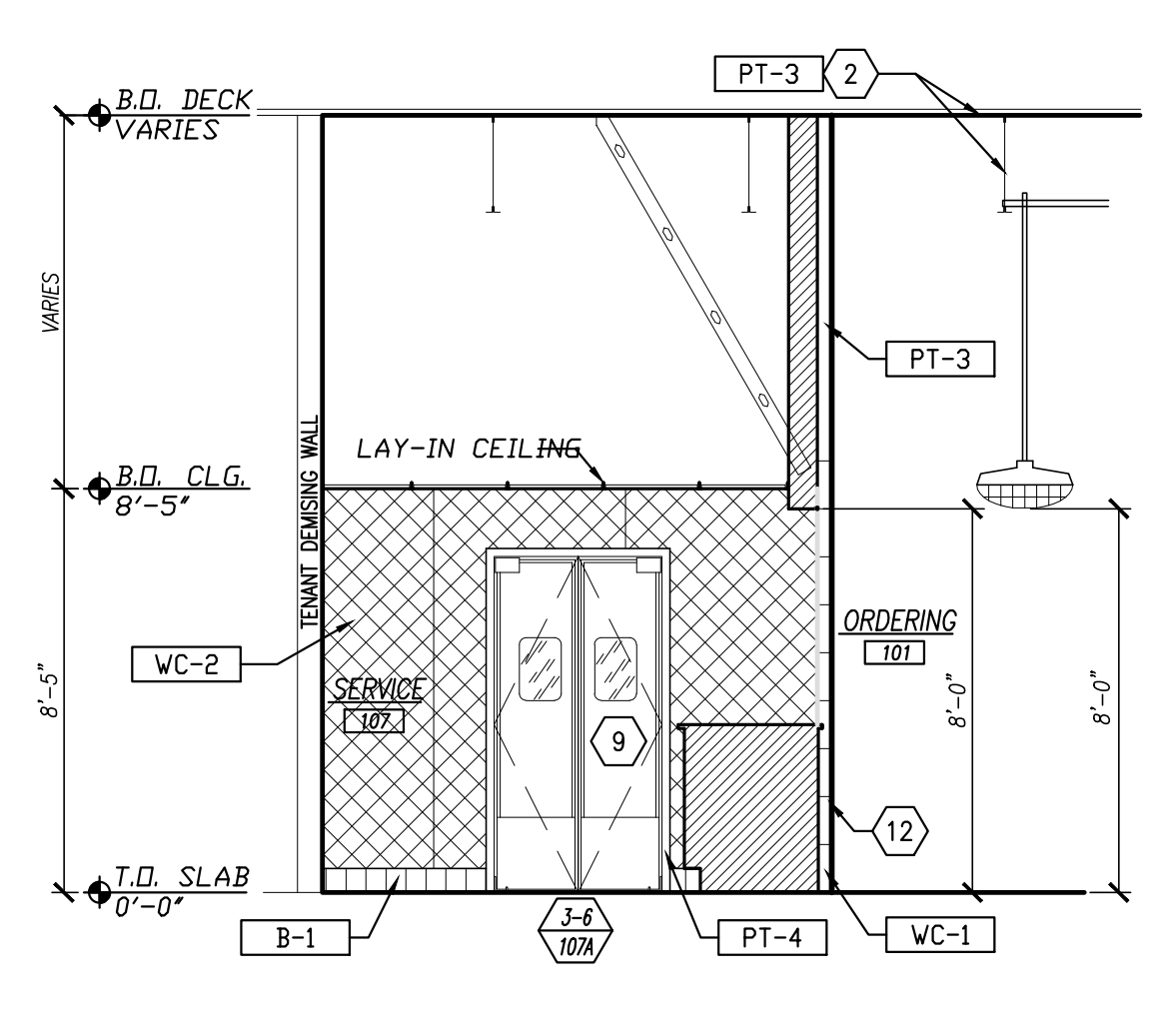
INTERIOR FINISHES	
<b>FLOOR FINISHES</b>	
F-1	POLISHED CONCRETE POLISH SLAB TO 800 GRIT, INFILL CRACKS AND JOINTS WITH EPOXY, SEAL WITH PENETRA-GUARD SEALER WITH DIAMOND PADS TO BURNISH MATERIAL INTO CONCRETE.
F-2	QUARRY TILE DAL-TILE - RED BLAZE #0040, GROUT - CUSTOM BUILDING PRODUCTS #99 BURNT CLAY. CONCRETE - LIGHT BROOM FINISH.
F-3	CONCRETE - LIGHT BROOM FINISH.
<b>BASE</b>	
B-1	QUARRY TILE DAL-TILE - RED BLAZE #0040, GROUT - CUSTOM BUILDING PRODUCTS #99 BURNT CLAY.
B-2	DAL-TILE - UNITY PORCELAIN TILE - P405 ASHOREY #S-36CRT (COVE BASE W/ MIN. 3/8" RADIUS)
B-3	RUBBER BASE
<b>WALL FINISHES</b>	
PT-1	SHERWIN WILLIAMS - SW #6071 POSITIVE RED (TOMATO RED)
PT-2	SHERWIN WILLIAMS - SW #6378 CRISP LINEN (OFF WHITE)
PT-3	SHERWIN WILLIAMS - SW #7076 CYBERSPACE (DARK GRAY)
PT-4	SHERWIN WILLIAMS - SW #6258 TRICORN BLACK (SEMI-GLOSS BLACK)
PT-5	SHERWIN WILLIAMS - SW #6258 TRICORN BLACK (FLAT BLACK)
<b>WAINSCOT</b>	
WC-1	DAL-TILE - UNITY PORCELAIN TILE - P406 NERO (12" X 24" RUNNING BOND - FIELD - FINISH: UN-POLISHED) (12" X 12" - ACCENT - FINISH: VARIOUS)
WC-2	QUILTED STAINLESS STEEL PANELS - 20ga., 300 SERIES FURNISHED AND INSTALLED BY EQUIPMENT SUPPLIER, JOINT TRIM STRIPS TO RUN VERTICAL WITHOUT HORIZONTAL JOINTS FROM BASE TO CEILING ATTACH WITH ADHESIVE, SEAL TO TILE BASE.
WC-3	FRP (FIBER REINFORCED PLASTIC) PANELS - MARLITE WHITE WITH JOINT STRIPS, ATTACH WITH ADHESIVE, SEAL TO TILE BASE. FURNISHED AND INSTALLED BY EQUIPMENT SUPPLIER.
WC-4	RUSTIC HICKORY WOOD SLATS - FURNISHED AND INSTALLED BY EQUIPMENT SUPPLIER.
WC-5	DAL-TILE - UNITY PORCELAIN TILE - P405 ASHOREY (12" X 24" RUNNING BOND - FIELD - FINISH: UN-POLISHED) (12" X 6" - ACCENT - FINISH: VARIOUS)
<b>MISCELLANEOUS</b>	
PL-1	PLASTIC LAMINATE - WHITE - CABINET INTERIORS, FURNISHED AND INSTALLED BY EQUIPMENT SUPPLIER.
PL-2	PLASTIC LAMINATE - NEVAMAR #56053E JETT BLACK (TEXTURED) - TABLE TOPS FURNISHED AND INSTALLED BY EQUIPMENT SUPPLIER.
C-1	CORIAN - SOLID SURFACE MATERIAL - BLACK - COUNTER TOPS FURNISHED AND INSTALLED BY EQUIPMENT SUPPLIER.
<b>GROUT</b>	
RESTROOMS	- CUSTOM GROUT #333 ALABASTER
DINING ROOM	- CUSTOM GROUT #301 ARTIC ICE
<b>TRIM / EDGE PROTECTION</b>	
RESTROOMS	- RONDEC ALUMINUM SCHLUTER STRIP ALONG TOP EDGE OF TILE WAINSCOT.
DINING ROOM	- RONDEC ALUMINUM SCHLUTER STRIP ALONG TOP EDGE OF TILE WAINSCOT AND OUTSIDE CORNERS.
<b>CEILING</b>	
ACT-1	2"x4" SUSPENDED - AMERICAN GYPSUM - FIRE BLOCK TEXTURED VINYL FACED GYPSUM CORE LAY-IN PANELS, CLASS 'A' FIRE RATING, CEILING GRID - CHICAGO METALLIC, 15/16" WHITE ALUMINUM CAPPED, HOOK TYPE #264-01H



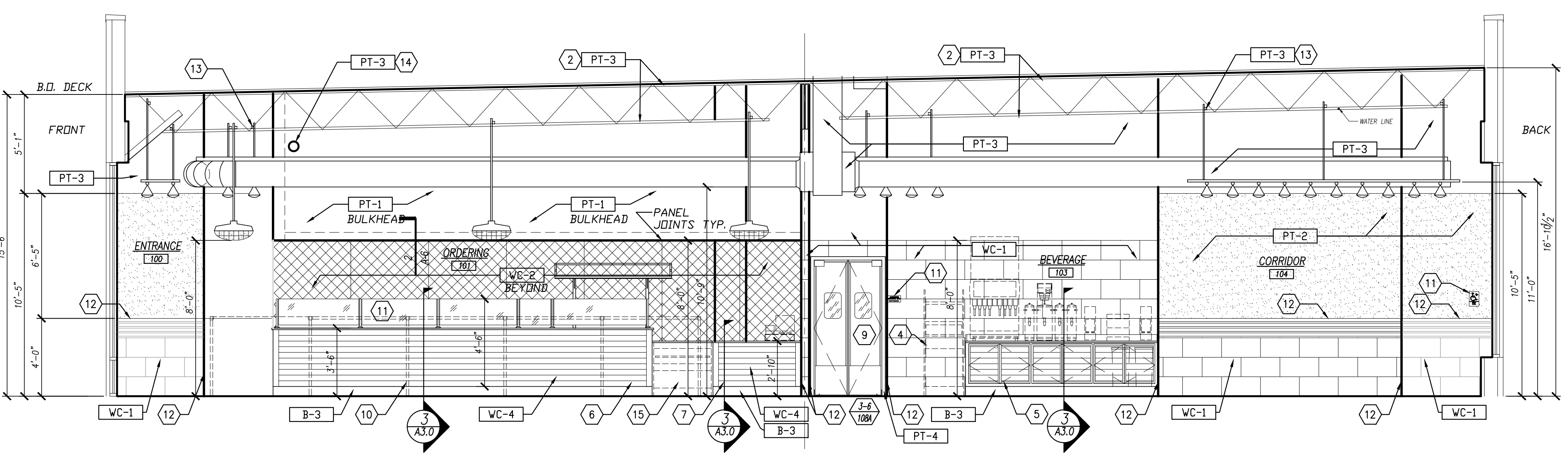
1 INTERIOR ELEVATION  
A-3 SCALE: 1/4" = 1'-0"



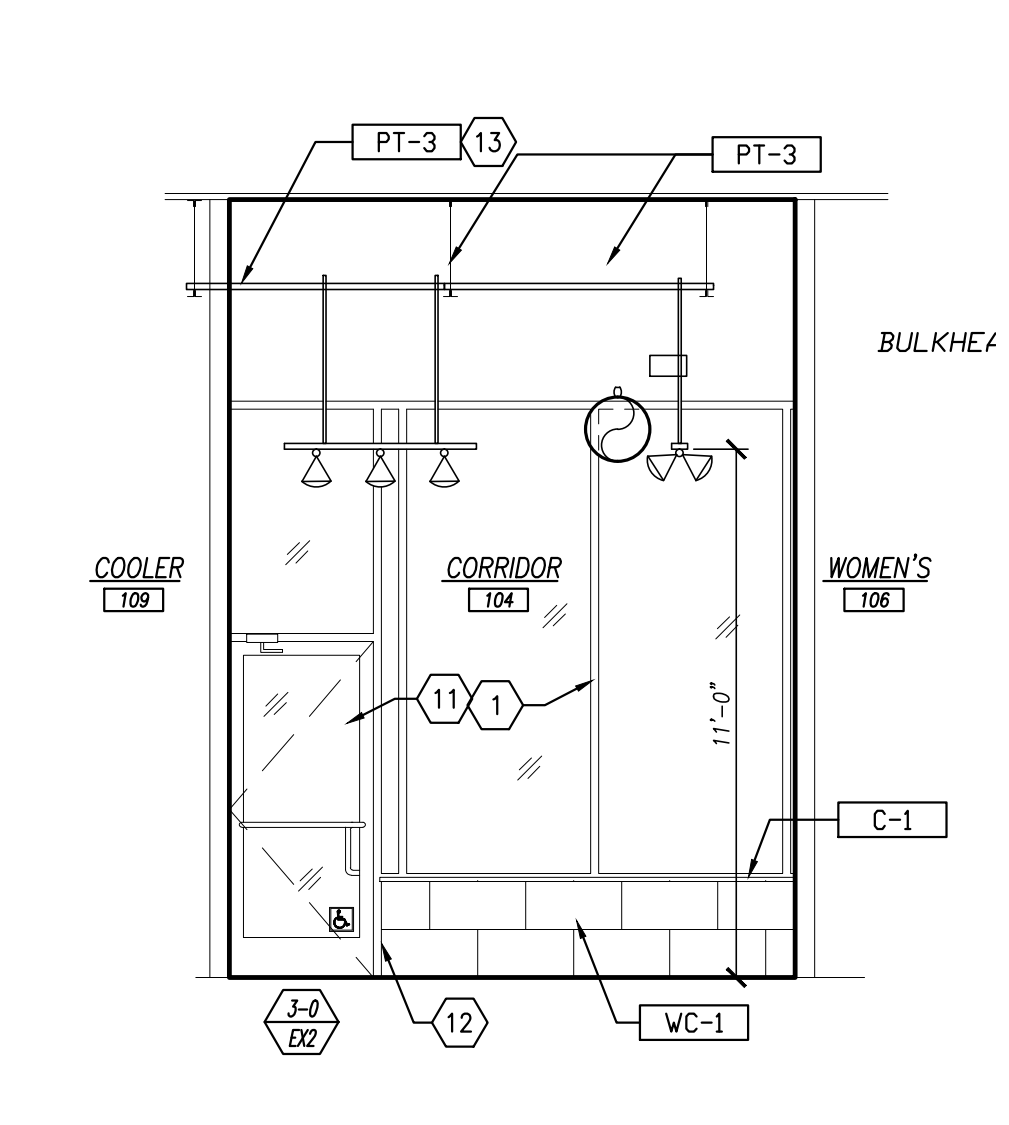
2 INTERIOR ELEVATION  
A-3 SCALE: 1/4" = 1'-0"



3 INTERIOR ELEVATION  
A-3 SCALE: 1/4" = 1'-0"



4 INTERIOR ELEVATION  
A-3 SCALE: 1/4" = 1'-0"

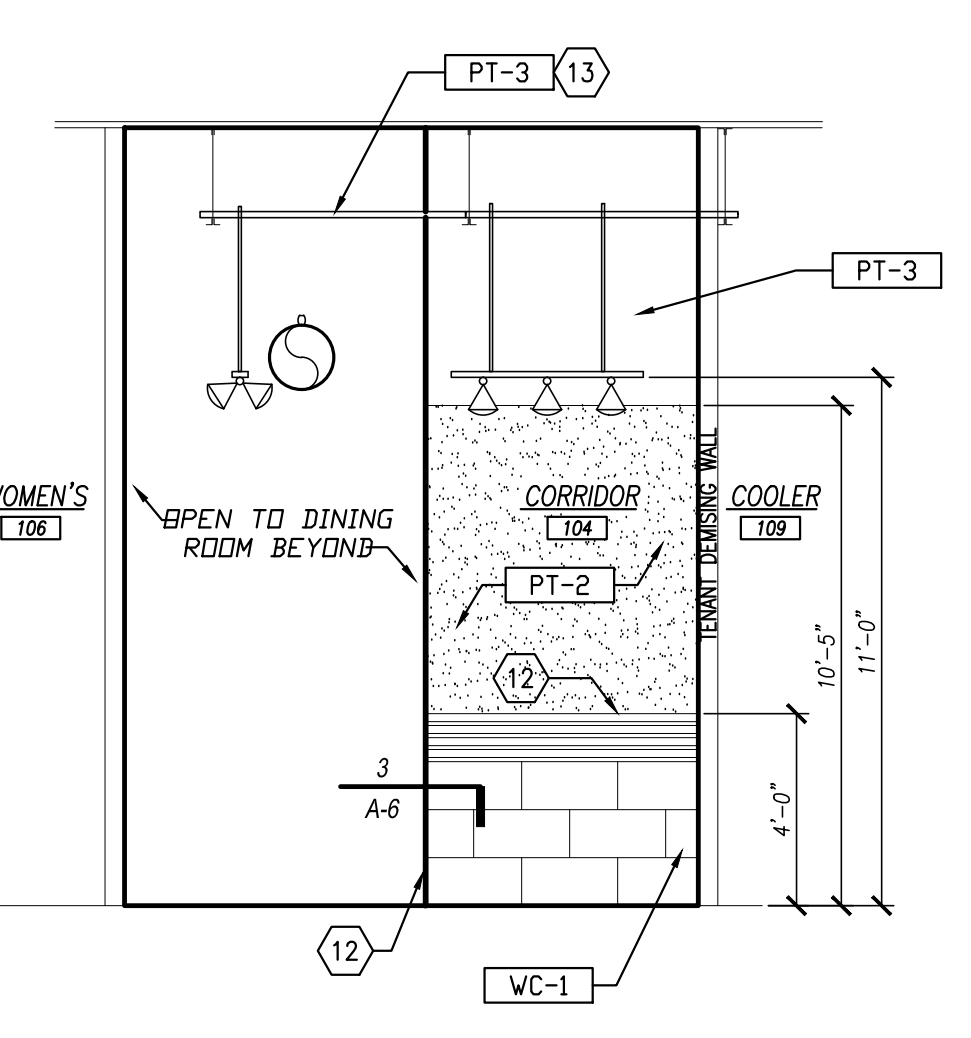


5 INTERIOR ELEVATION  
A-3 SCALE: 1/4" = 1'-0"

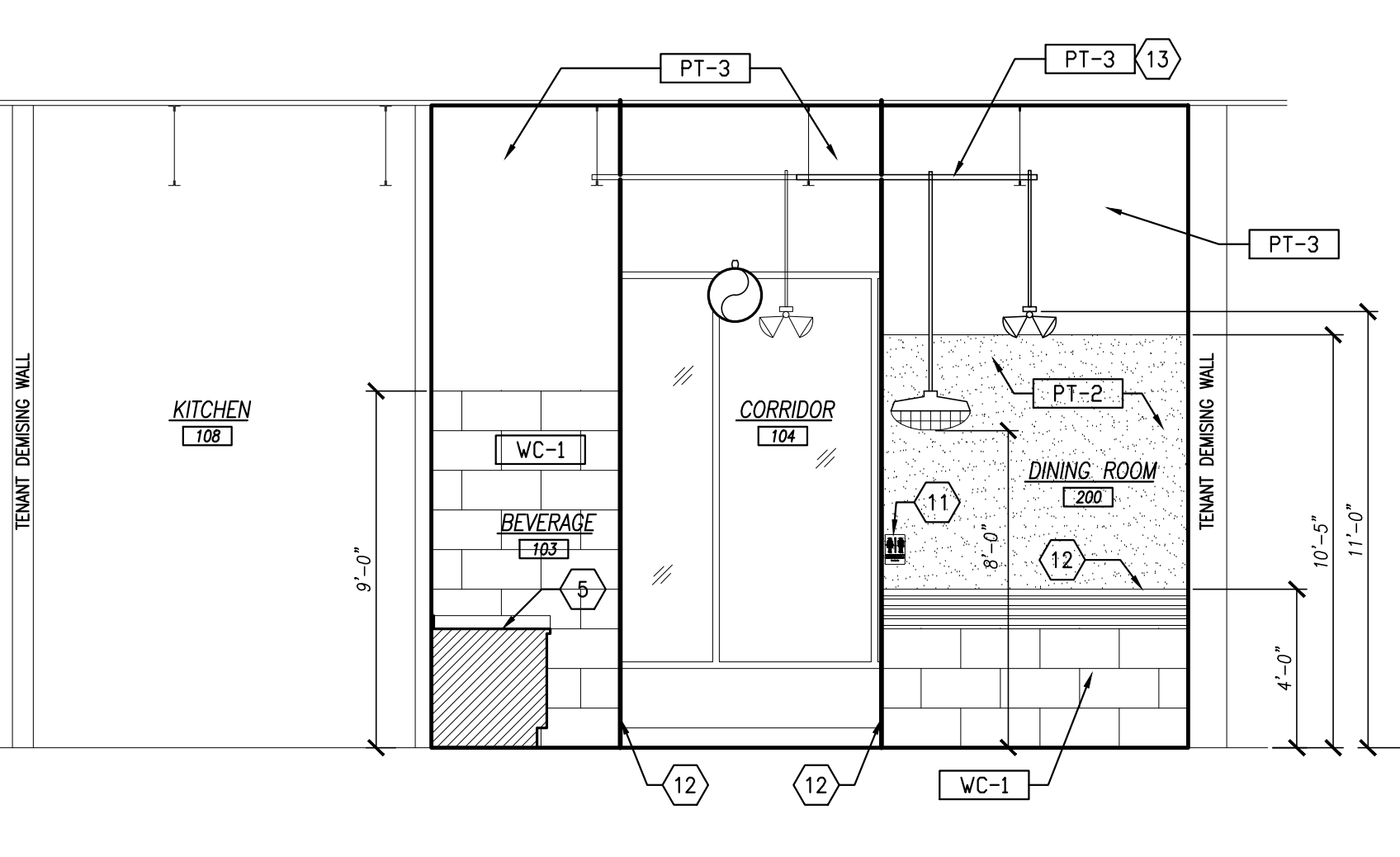
- ELEVATION NOTES:
- EXISTING STOREFRONT SYSTEM TO REMAIN.
  - EXISTING STRUCTURE, PAINT AS INDICATED.
  - NOT USED.
  - TRASH RECEPTACLE, SEE EQUIPMENT SCHEDULE.
  - ALL MILLWORK AND FURNITURE PROVIDED AND INSTALLED BY EQUIPMENT PROVIDER.
  - LOW WALL PROVIDED AND INSTALLED BY EQUIPMENT PROVIDER.
  - FRONT COUNTER PROVIDED AND INSTALLED BY EQUIPMENT PROVIDER.
  - SNEEZE GUARD PROVIDED AND INSTALLED BY EQUIPMENT PROVIDER.
  - ELLIPSON TYPE DOOR PROVIDED AND INSTALLED BY EQUIPMENT PROVIDER.
  - CROWD CONTROL RAIL PROVIDED AND INSTALLED BY EQUIPMENT PROVIDER.
  - ALL TACTILE SIGNAGE PROVIDED BY OWNER.
  - CORNER GUARD, SEE 'A'-2.
  - PAINT ALL LIGHTING SUPPORTS AS INDICATED (UNI-STRUT) - TYP.
  - PAINT EXISTING ROOF DRAIN PIPE AS INDICATED.
  - SPECIALTY DISPLAY UNIT PROVIDED AND INSTALLED BY EQUIPMENT PROVIDER.

# SAMPLE ONLY

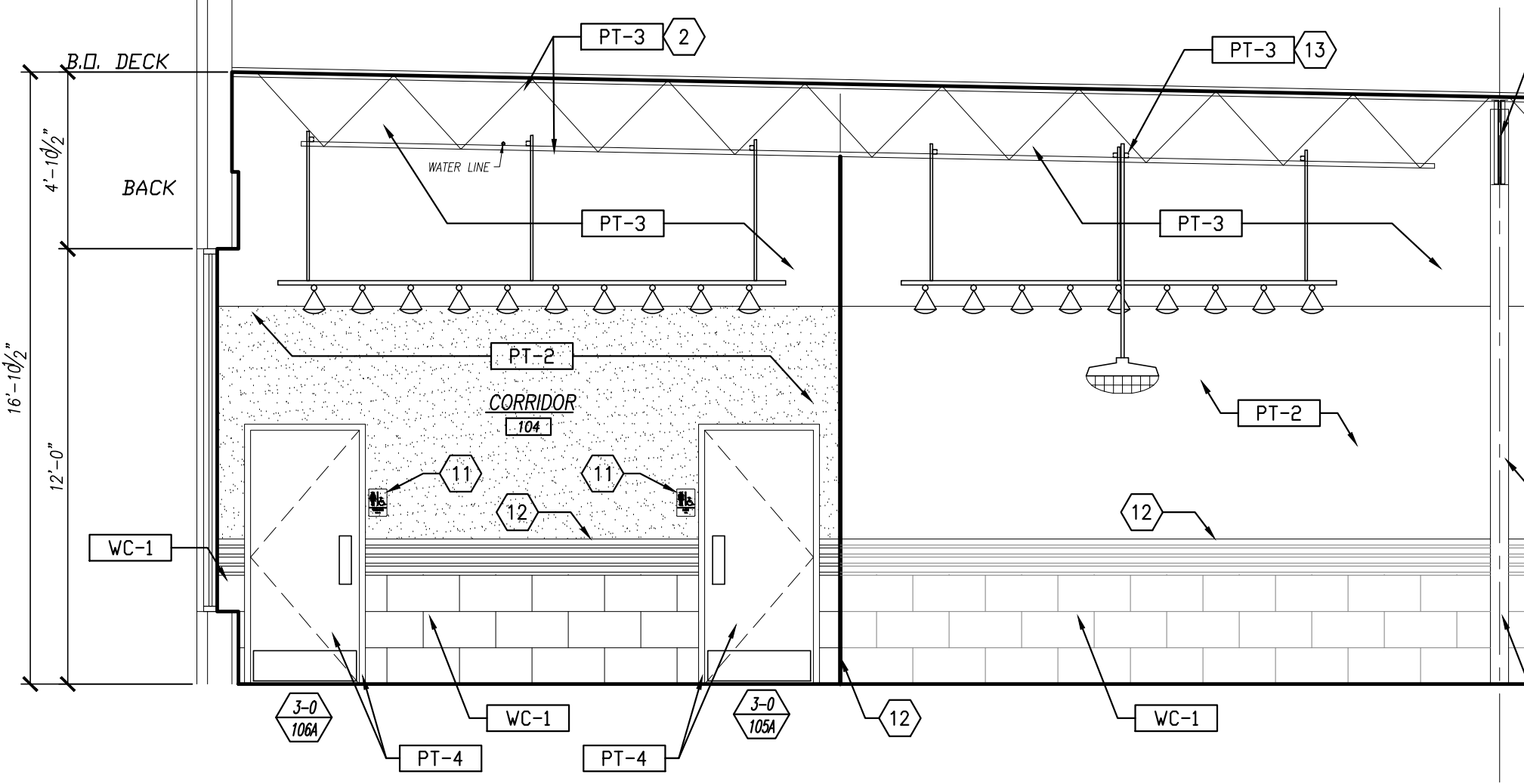
COPYRIGHT BY  
CREATIVE CONCEPTS AND DESIGN, INC.



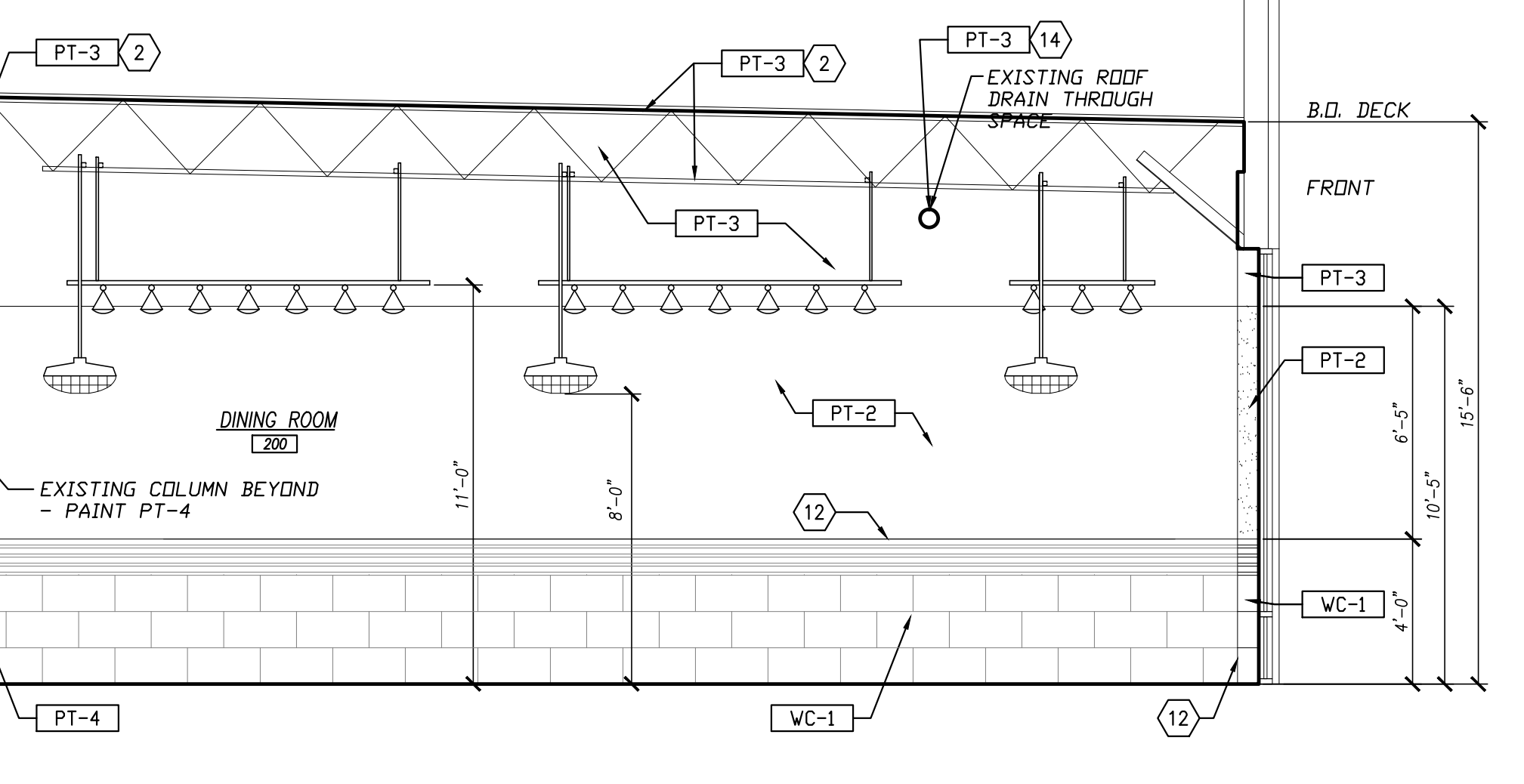
6 INTERIOR ELEVATION  
A-3 SCALE: 1/4" = 1'-0"



7 INTERIOR ELEVATION  
A-3 SCALE: 1/4" = 1'-0"



8 INTERIOR ELEVATION  
A-3 SCALE: 1/4" = 1'-0"



REVISION 1: FINISH SCHEDULE, INTERIOR ELEVATIONS, EXTERIOR CANOPY

INTERIOR ELEVATIONS (DINING ROOM, CORRIDOR)