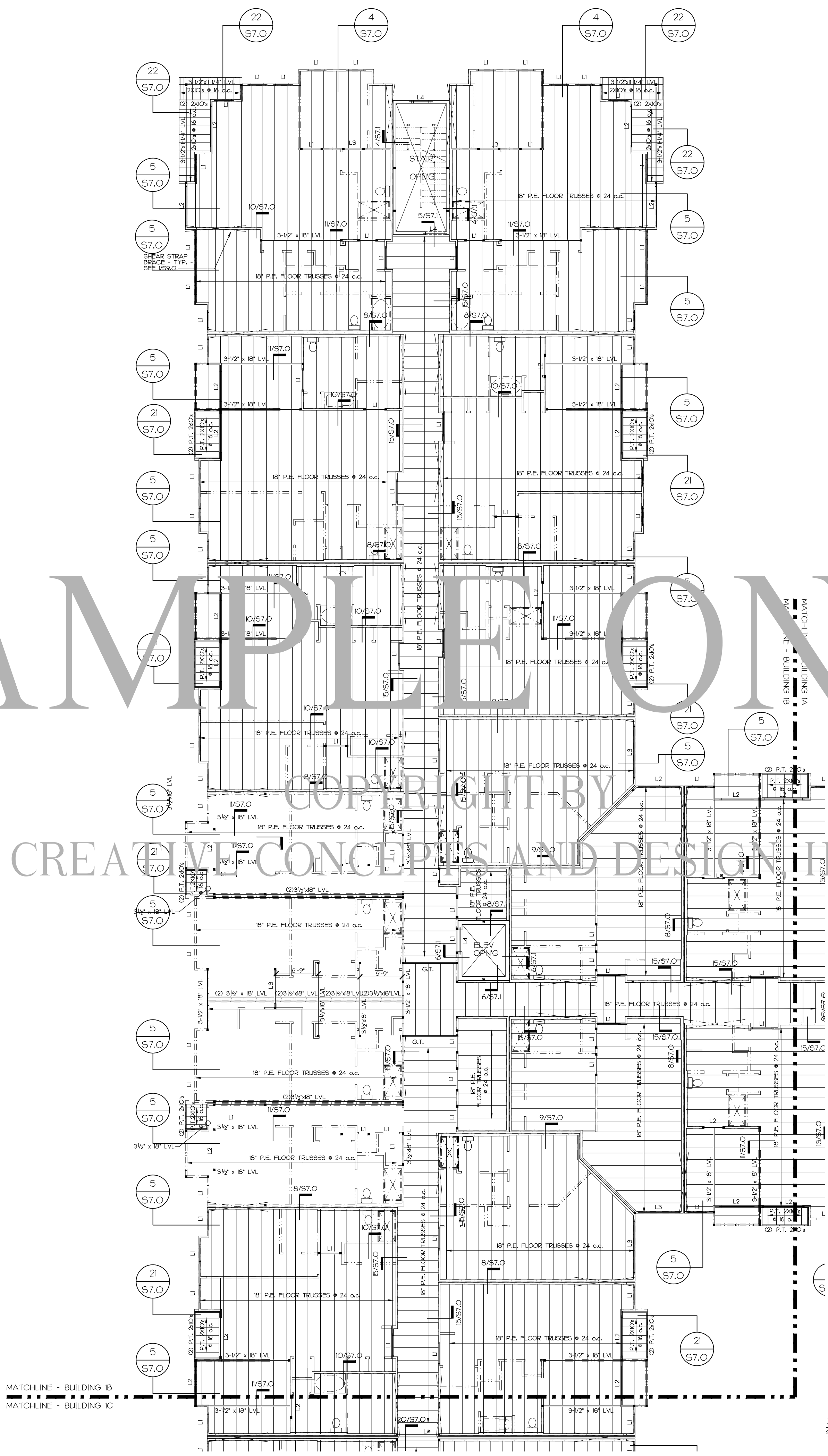


PRELIMINARY  
COORDINATION ONLY  
NOT FOR CONSTRUCTION

SAMPLE ONLY  
COPYRIGHT BY  
CREATIVE CONCEPTS AND DESIGN INC.



**SECOND FLOOR FRAMING SHEET NOTES:**

TRUSS BEARING ELEVATION IS -9'-11 1/2" ABOVE FIRST FLOOR FINISHED FLOOR ELEVATION (FFE) (WHICH VARIES UNLESS OTHERWISE NOTED AS 1'-0" - 0")  
SECOND FLOOR FFE IS -4'-8 1/4" ABOVE FIRST FLOOR FFE UNLESS OTHERWISE NOTED AS 1'-0" - 0"

FLOOR CONSTRUCTION:  
3/4" GYPCRETE ON 3/4" 1/8" PLYWOOD SUBFLOOR ON 18' PRE-ENGINEERED OPEN WEB WOOD FLOOR TRUSSES AT 24 o.c.

FFE ——— INDICATES FINISHED FLOOR ELEVATION  
FFFE ——— INDICATES REFERENCED FINISHED FLOOR ELEVATION  
T/STL ——— INDICATES TOP OF STEEL  
EOL ——— INDICATES EDGE OF SLAB  
EOD ——— INDICATES EDGE OF DECK  
FOS ——— INDICATES FACE OF BUILDING  
AFF ——— INDICATES ABOVE FINISHED FLOOR  
F.V. ——— INDICATES FLOOR VENT  
L ——— INDICATES LINTEL SEE SCHEDULE SHEET S10  
S ——— INDICATES STRAP BRACED SHEAR WALL SEE W99.0  
W ——— INDICATES STRAP BRACED SHEAR WALL SEE W99.0  
IN THE CASE OF A DOUBLE WALL BOTH WALLS SHALL HAVE STRAP BRACING INSTALLED.

ALL SECOND FLOOR LOAD BEARING WALLS SHALL BE CONSTRUCTED USING SINGLE (1) 2x4's @ 16 o.c.

**NOTE:**  
S3 shall be responsible for coordinating location of floor trusses in relation to all mechanical units & ductwork, plumbing fixtures & piping, etc. prior to placing trusses.

**DIMENSIONING NOTE:**  
DIMENSIONS SHOWN ARE TO OUTSIDE FACE OF STUD OR EDGE OF SLAB. DIMENSIONS SHOWN FOR RADIANT VENTERS SEE TYPE, LOCATION, AND DIMENSIONS. COORDINATE ALL DIMENSIONS SHOWN WITH LATEST ARCHITECTURAL FLOOR PLANS, AND NOTIFY ARCHITECT OF ANY CONFLICTS.

WALLS IN THE CORRIDORS (ON BOTH SIDES OF THE WALL) TO BE 18' x 48" INTERIOR SHEET ROCK ON 2x4 WALL STUDS (SPACED AS NOTED ON PLANS) WITH 64 COOLER NAILS @ 24 o.c. ALL EDGES AND STUDS AT FIRST FLOOR, 24 o.c. AT UPPER FLOORS.

INTERIOR PARTITION SEPARATION WALLS BETWEEN UNITS AND CORRIDORS SHALL BE 5/8" x 48" INTERIOR SHEET ROCK ON 2x4x26 WALL STUDS (SPACED AS NOTED ON PLANS) WITH 64 COOLER NAILS @ 24 o.c. ALL EDGES AND STUDS AT FIRST FLOOR, 24 o.c. AT UPPER FLOORS.

SECOND FLOOR FRAMING PLAN  
3/8" = 1'-0"

HSPA# 1805  
BLDG #1 - PART 'B'  
SECOND FLOOR FRAMING

SEPTEMBER 2, 2014

S3.1