

FINISH SCHEDULE										
ROOM NO.	ROOM NAME	FLOOR	BASE	WALL	WAINSCOT	CEILING	CEILING HGT.	REMARKS		
EX1	SALES FLOOR	CPT	RB	GWB, PTD	-	EXP / PTD	OPEN / 18'-4"	NOTE 1, 4, 5, 9		
EX2	OFFICE	VCT	RB	GWB, PTD	-	ACT / ETR	EXIST. VERIFY	NOTE 1, 2, 4, 5, 9		
EX3	WOMEN	VCT / ETR	-	GWB, PTD	-	ACT	EXIST. VERIFY	NOTE 1, 2, 4, 5, 6, 7, 8		
EX4	MEN	VCT / ETR	-	GWB, PTD	-	ACT	EXIST. VERIFY	NOTE 1, 2, 4, 5, 6, 7, 8		
EX5	CORRIDOR	SV / ETR	-	GWB, PTD	-	ACT / ETR	EXIST. VERIFY	NOTE 1, 2, 4, 6, 8		
EX6	UTILITY	CONC. / ETR	-	GWB, PTD	-	-	-	NOTE 1, 2, 5, 6, 8		
EX7	RECEIVING	CONC. / ETR	-	GWB, PTD	-	EXP	EXIST. VERIFY	NOTE 1, 2, 5		
EX8	MEZZANINE	CONC. / ETR	-	GWB, PTD	-	EXP	EXIST. VERIFY			

NOTE: ALL INTERIOR FINISHES WILL COMPLY WITH TABLE 803.5 IBC.

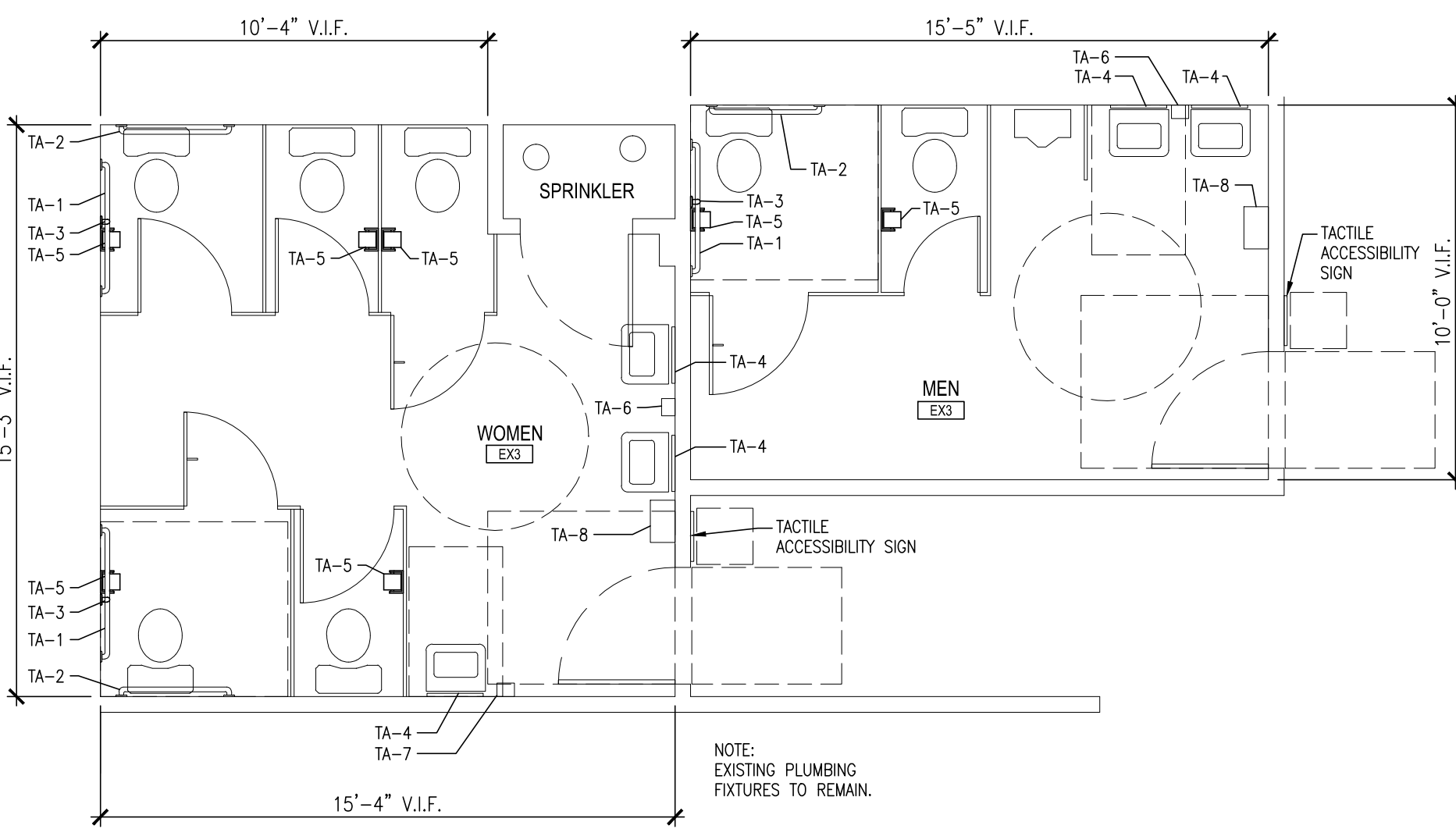
MATERIAL LEGEND			
MATERIAL ABBREVIATIONS			
ACT	ACOUSTIC CEILING TILE (WASHABLE)	PTD	PAINT (AS SPECIFIED)
S-CONC	SCORED & STAINED CONCRETE	RB	RUBBER BASE
CONC.	SEALED CONCRETE	RF	RESINOUS FLOORING
CTB	CERAMIC TILE BASE	SS	STAINLESS STEEL
EXP	EXPOSED STRUCTURE	SV	SHEET VINYL
ETR	EXISTING TO REMAIN	VB	VINYL BASE
GWB	GYPSUM WALLBOARD	VCT	VINYL COMPOSITION TILE
MWB	MOISTURE RESISTANT GYP. WALLBRD.	WC	WALL COVERING (AS SPECIFIED)
MBL	MARBLE	SPEC.	SEE SPECIFICATIONS

- NOTES:
- SEE SPECIFICATIONS ON SHEET A-2.0 FOR SPECIFIC FINISH INFORMATION, COLOR OR MATERIAL.
 - PAINT WALLS SAME AS SALES.
 - ALL FINISH MATERIALS TO CONFORM TO MINIMUM CLASS C FLAME SPREAD AND SMOKE.
 - EXISTING CEILING GRID TO REMAIN PROVIDE NEW CEILING TILES ONLY.
 - PROVIDE TRANSITION STRIPS AT DIFFERING FLOOR FINISHES APPROPRIATE TO THE FINISHES.
 - EXISTING FLOORING TO REMAIN. PATCH AND REPAIR AS REQUIRED TO A "LIKE NEW" FINISH.
 - EXISTING VCT FLOORING TO BE CLEANED TO A LIKE NEW FINISH. REPLACE OR REPAIR ALL DAMAGED AND OR LOOSE TILES.
 - PROVIDE AND/OR REPLACE ANY MISSING OR DAMAGED EXISTING WALL BASE. MATCH EXISTING MATERIAL AND COLOR.
 - REPLACE ANY BROKEN, MISSING OR DAMAGED CEILING TILES.

DOOR SCHEDULE									
NO.	DOOR	DOOR TYPE	FRAME TYPE	HARDWARE	NOTES				
	LOCATION								
	LEAF SIZE								
	ELEVATION								
	WOOD								
	STEEL								
	ELEVATION								
	WOOD								
	STEEL								
EX1A	PR. 3'-0" x 7'-0"	BI-PARTING	-	-	NOTE 10				
EX1B	PR. 3'-0" x 7'-0"	BI-PARTING	-	-	NOTE 10				
EX1C	3'-0" x 7'-0"	-	-	GROUP 1	NOTE 1, 7, 8, 11, 12				
EX2A	3'-0" x 7'-0"	-	-	GROUP 6	NOTE 1, 7, 13				
EX3A	3'-0" x 7'-0"	-	-	GROUP 4	NOTE 1, 7				
SA	VERIFY 7'-0"	-	-	-	NOTE 1, 7				
EX4A	3'-0" x 7'-0"	-	-	GROUP 5	NOTE 1, 7				
EX5A	3'-0" x 7'-0"	-	-	GROUP 3	NOTE 1, 3, 6, 7, 8, 9, 11, 12				
EX6A	3'-0" x 7'-0"	-	-	-	NOTE 1, 7				
EX7A	3'-6" x 7'-0"	-	-	GROUP 2	NOTE 1, 7, 12				
EX7B	3'-0" x 7'-0"	-	-	GROUP 2	NOTE 1, 7, 14				
EX7C	10'-0" x 7'-0"	-	-	-	NOTE 6, 7				

- DOOR NOTES:
- PAINT DOOR.
 - ALL LOCKSET HANDLES TO BE LEVER TYPE.
 - APPLY SIGN TO EXTERIOR OF DOOR.
 - RELOCATE EXISTING TACTILE SIGN TO NEW LOCATION.
 - VERIFY LOCK MECHANISM IS IN PROPER WORKING CONDITION - REPLACE AS NEEDED.
 - VERIFY ALL EXISTING DOOR HARDWARE IS IN PROPER WORKING CONDITION - REPLACE AS NEEDED.
 - VERIFY EXISTING PANIC DEVICE IS IN PROPER WORKING CONDITION - REPLACE AS NEEDED.
 - VERIFY EXISTING DOOR BELL IS IN PROPER WORKING CONDITION. PROVIDE NEW IF REQUIRED.
 - MAKE EXISTING DOOR IMPERMEABLE.
 - VERIFY ALARM IS IN PROPER WORKING CONDITION. REPLACE AS NEEDED.
 - VERIFY CLOSER IS IN PROPER WORKING CONDITION. REPLACE AS NEEDED. (IF PRESENT)
 - REMOVE EXISTING CLOSER.
 - RELOCATE EXISTING CLOSER FROM OFFICE IF NO CLOSER PRESENT.

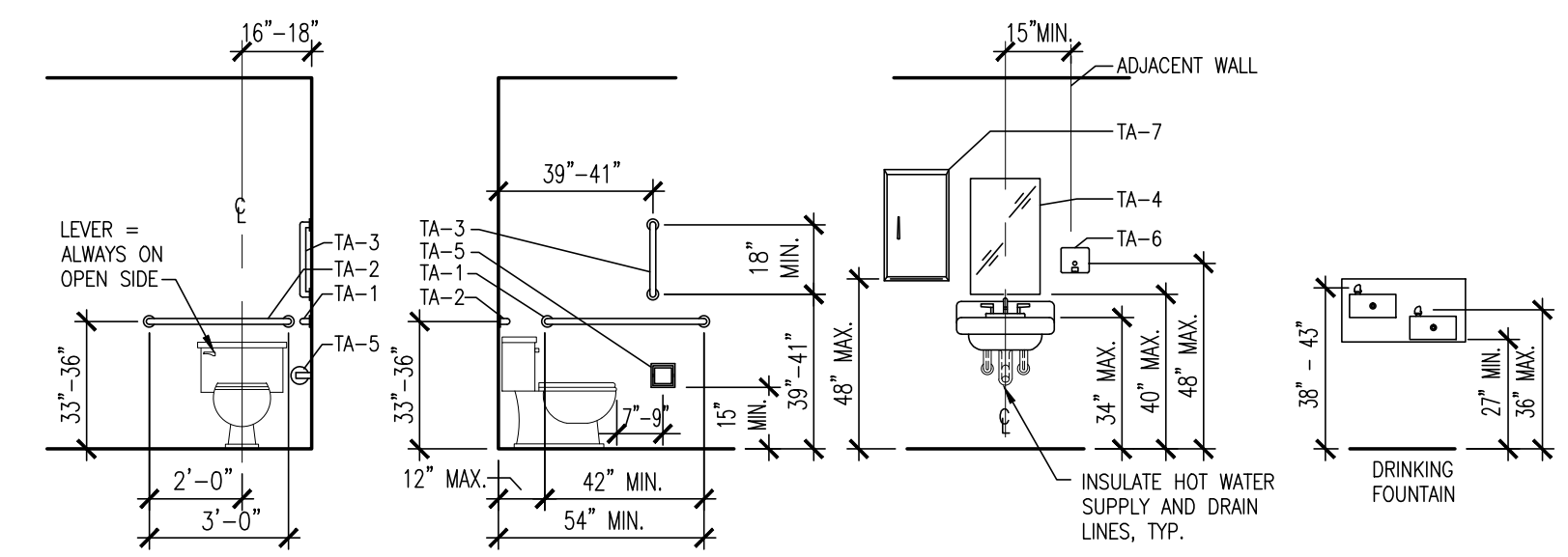
- HARDWARE SCHEDULE:
- GROUP #1 (FRONT ENTRY) (SIDE EXIT)
- 2 SIGN, (TACTILE EXIT)
- GROUP #2 (SALES TO RECEIVING) (CORRIDOR TO RECEIVING)
- 2 SIGN, (TACTILE AUTHORIZED PERSONNEL ONLY)
- GROUP #3 (CORRIDOR TO EXTERIOR)
- 1 EXTERIOR VINYL SIGN, 2" HIGH LETTERS, HELVETICA, "ANNA'S LINENS" - SELF ADHESIVE
- 1 INTERIOR SIGN, (TACTILE EXIT)
- GROUP #4 (WOMEN)
- 1 SIGN, (TACTILE WOMEN RESTROOM)
- GROUP #5 (MEN)
- 1 SIGN, (TACTILE MEN RESTROOM)
- GROUP #6 (OFFICE)
- 1 SIGN, (TACTILE OFFICE)



2 Enlarged Toilet Plan
A-1.0 SCALE: 1/4" = 1'-0"

TOILET ACCESSORIES SCHEDULE			
MARK	ITEM	MOUNTING HEIGHT	MODEL
TA-1	42" LG. GRAB BAR	33" - 36" AFF TO CL OF BAR	EXISTING
TA-2	36" LG. GRAB BAR	33" - 36" AFF TO CL OF BAR	EXISTING
TA-3	18" LG. GRAB BAR - VERT.	39" - 41" AFF TO CL OF BAR	AMERICAN SPECIALTIES
TA-4	EXISTING MIRROR	40" MAX. AFF TO BOTTOM OF MIRROR	EXISTING
TA-5	TOILET TISSUE DISPENSER	1'-2" MIN. AFF TO CL. OF DISPENSER	AMERICAN SPECIALTIES
TA-6	SOAP DISPENSER	48" MAX. AFF TO CL OF DISP MECHANISM	EXISTING
TA-7	SOAP DISPENSER	48" MAX. AFF TO CL OF DISP MECHANISM	HOME DEPOT - ITEM #461334
TA-8	PAPER TOWEL DISPENSER	48" MAX. AFF TO CL OF DISP MECHANISM	HOME DEPOT

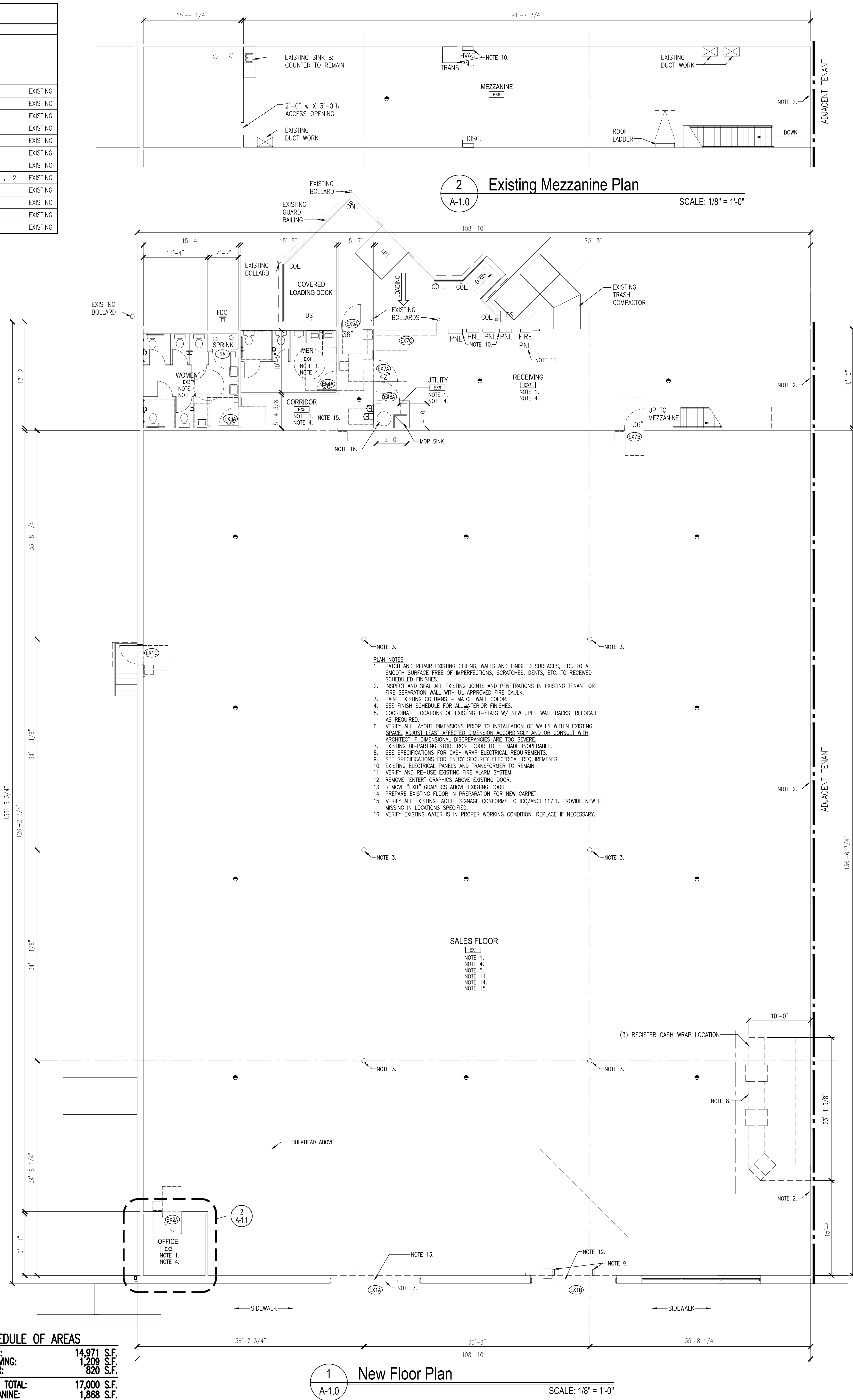
- NOTES:
- PROVIDE NON-COMBUSTIBLE BLOCKING OR APPROPRIATE MTL. PLATE BEHIND AREAS TO RECEIVE WALL MOUNTED EQUIPMENT.
 - MATCH EXISTING GRAB BAR TYPE, STYLE AND FINISH IF EXISTING IS USED.
 - VERIFY EXISTING TOILET ACCESSORIES TO BE IN A LIKE NEW WORKING CONDITION. REPLACE OR PROVIDE AS NECESSARY.
 - VERIFY PLUMBING PROTECTION UNDER VANITIES ARE IN PROPER WORKING CONDITION. REPLACE IF NECESSARY OR PROVIDE NEW



3 Typical Fixtures and Accessory Mounting Hts.
A-1.0 SCALE: 1/4" = 1'-0"

SAMPLE ONLY

COPYRIGHT BY
CREATIVE CONCEPTS AND DESIGN, INC.



SCHEDULE OF AREAS	
SALES:	14,971 S.F.
RECEIVING:	1,709 S.F.
OTHER:	820 S.F.
LEASE TOTAL:	17,000 S.F.
MEZZANINE:	1,868 S.F.

1 New Floor Plan
A-1.0 SCALE: 1/8" = 1'-0"

Project Team

Project:

Seal

Issue Date:

Revisions:

Sheet Title:

FLOOR PLAN,
ENLARGED TOILET
PLANS, FINISH AND
DOOR SCHEDULES

A-1.0

Sheet no.