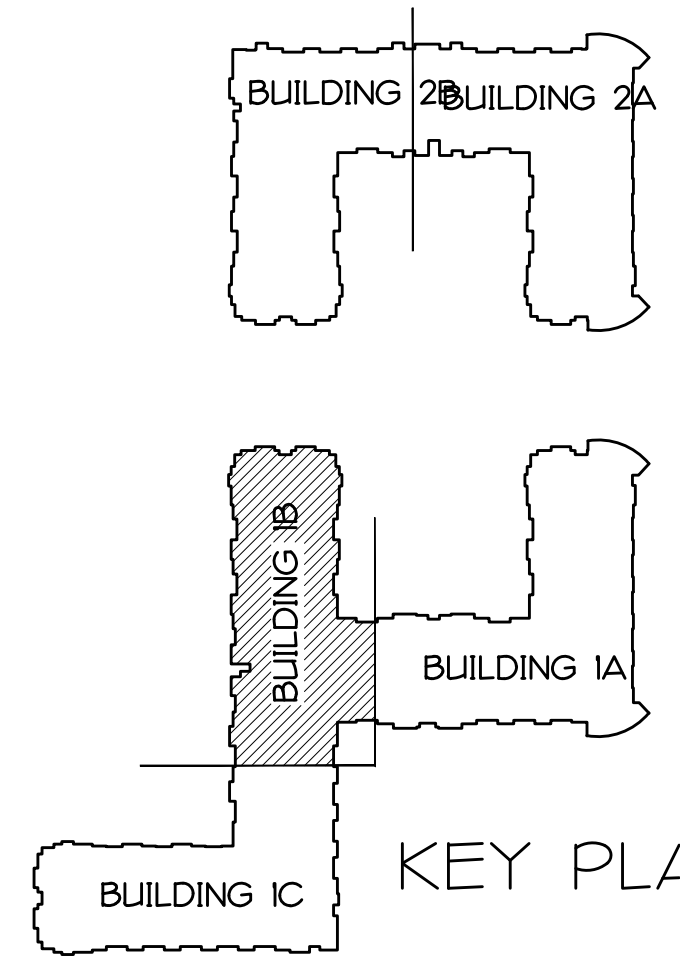
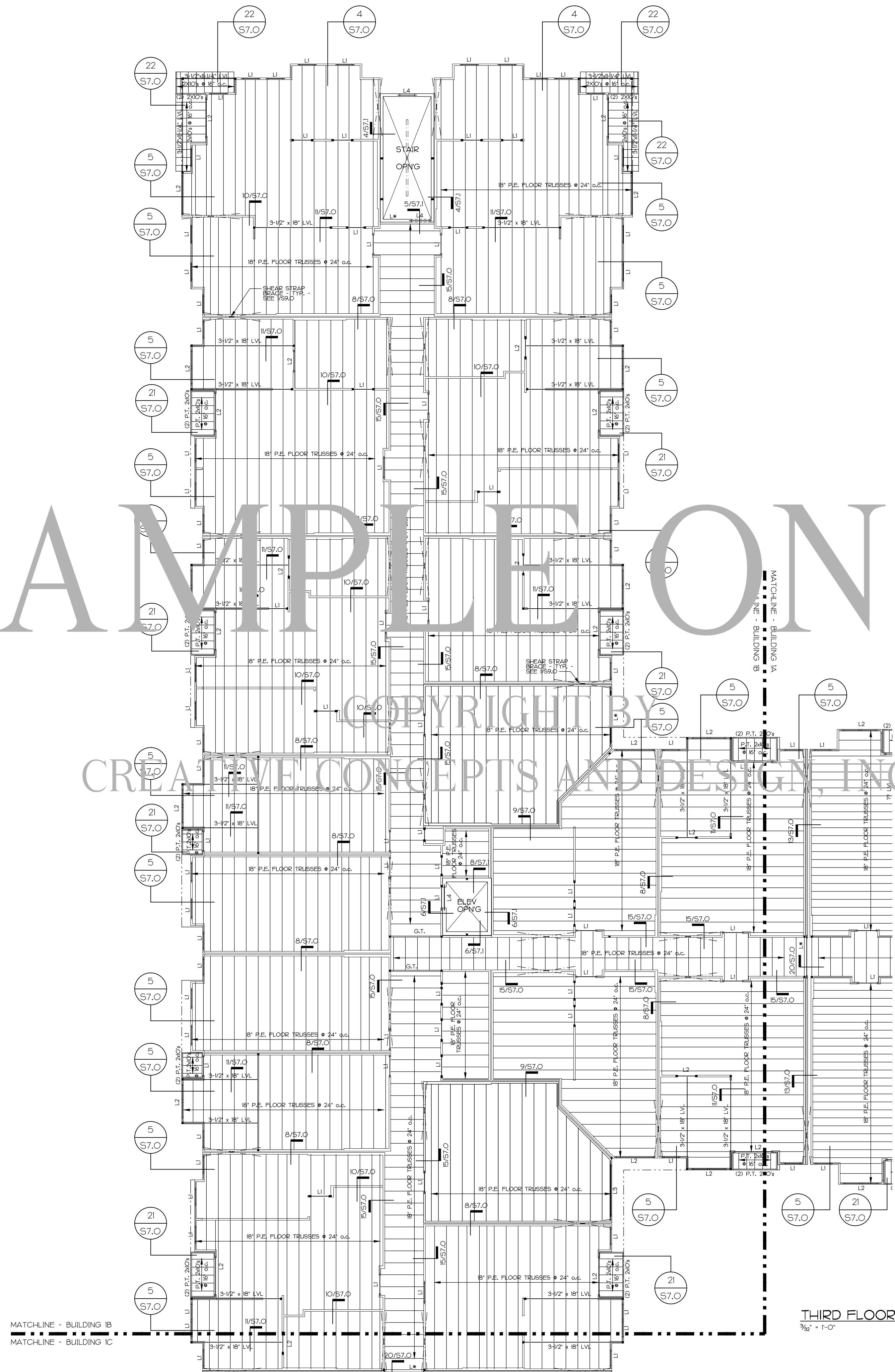


SAMPLE ONLY

COPYRIGHT BY
CREATIVE CONCEPTS AND DESIGN, INC.



PRELIMINARY
COORDINATION ONLY
NOT FOR CONSTRUCTION

THIRD FLOOR FRAMING SHEET NOTES:
 TRUSS BEARING ELEVATION IS +0'-9 3/4" ABOVE FIRST FLOOR FINISHED FLOOR ELEVATION (FFL) (WHICH VARIES) UNLESS OTHERWISE NOTED AS ± 0'-0"
 THIRD FLOOR FFL IS +2'-4 1/2" ABOVE FIRST FLOOR FFL (WHICH VARIES) UNLESS OTHERWISE NOTED AS ± 0'-0"
 FLOOR CONSTRUCTION:
 3/4" GYPSUM CORE ON 1/2" T&G PLYWOOD SUBFLOOR ON 18" PRE-ENGINEERED OPEN WEB WOOD FLOOR TRUSSES AT 24' o.c.
 USE SECTIONS #154 & #154 FOR ALL SLEEVED OPENINGS AND FRAMED OPENINGS. REQUIRED COORDINATE LOCATIONS WITH MECHANICAL, PLUMBING AND EQUIPMENT DRAWINGS.
 FFE --- INDICATES FINISHED FLOOR ELEVATION
 T&G --- INDICATES TOP OF STEEL
 EOG --- INDICATES EDGE OF SLAB
 EOD --- INDICATES EDGE OF DECK
 FFB --- INDICATES FACE OF BUILDING
 AFF --- INDICATES ABOVE FINISHED FLOOR
 LK --- INDICATES LINTEL, SEE SCHEDULE SHEET S10
 S --- INDICATES STRAP BRACING, SEE SHEETS S9.0
 G --- INDICATES GANG OF 2x STUDS, SEE 4/S10

REFER TO ARCHITECTURAL FLOOR PLAN FOR DIMENSIONS OF ALL INTERIOR WALLS SHOWN ON PLAN.
ALL THIRD FLOOR LOAD BEARING WALLS SHALL BE CONSTRUCTED USING SINGLE (1) 2x4s @ 16" o.c.

NOTE:
 COG SHALL BE RESPONSIBLE FOR COORDINATING LOCATION OF FLOOR TRUSSES IN RELATION TO ALL MECHANICAL UNITS & DUCTWORK, PLUMBING FIXTURES & PIPING, ETC. PRIOR TO PLACING TRUSSES.

DIMENSIONING NOTE:
 DIMENSIONS SHOWN ARE TO OUTSIDE FACE OF STUD OR EDGE OF SLAB. SEE ARCHITECTURAL DRAWINGS FOR MASONRY, JOISTS, SIZE, TYPE, LOCATION, AND DIMENSIONS. COORDINATE ALL DIMENSIONS SHOWN WITH LATEST ARCHITECTURAL FLOOR PLANS, AND NOTIFY ARCHITECT OF ANY CONFLICTS.

WALLS IN THE CORRIDORS (ON BOTH SIDES OF THE WALL) TO BE 18" x 48" INTERIOR SHEET ROCK ON 2x4x6 WALL STUDS SPACED AS NOTED ON PLANS WITH 48 COOLER NAILS @ 4" o.c. ALL EDGES AND STUDS AT FIRST FLOOR, 7" o.c. AT UPPER FLOORS.
 INTERIOR TENANT SEPARATION WALLS BETWEEN UNITS AND CORRIDORS SHALL BE 18" x 48" INTERIOR SHEET ROCK ON 2x4x6 WALL STUDS SPACED AS NOTED ON PLANS WITH 48 COOLER NAILS @ 4" o.c. ALL EDGES AND STUDS AT FIRST FLOOR, 7" o.c. AT UPPER FLOORS.

THIRD FLOOR FRAMING PLAN
3/8" = 1'-0"

HSPA# 1805

BLDG #1 - PART 'B'
THIRD FLOOR FRAMING

SEPTEMBER 2, 2014

S4.1