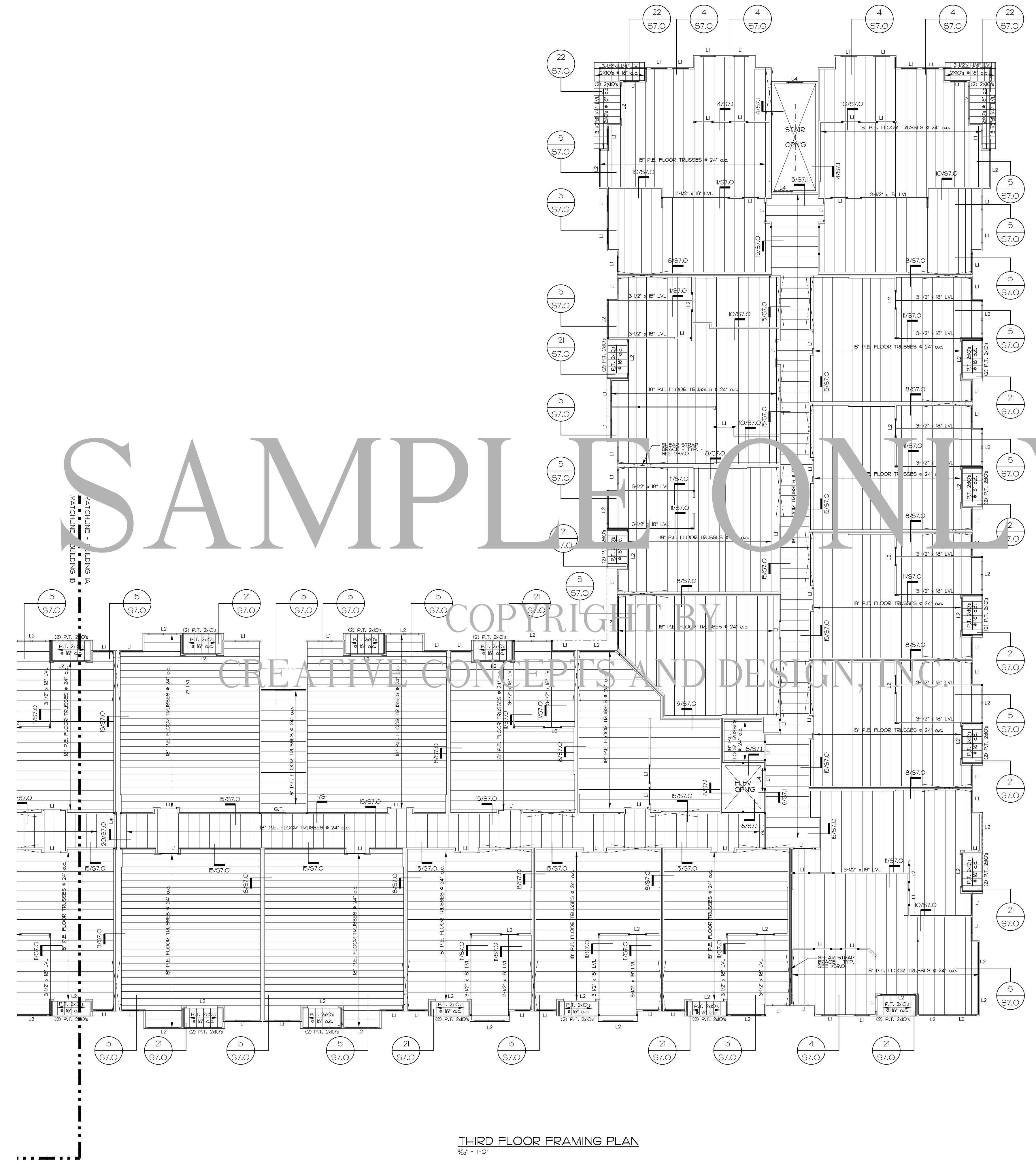


PRELIMINARY
COORDINATION ONLY
NOT FOR CONSTRUCTION

SAMPLE ONLY



THIRD FLOOR FRAMING PLAN
3/2" = 1'-0"

THIRD FLOOR FRAMING SHEET NOTES:
 TRUSS BEARING ELEVATION IS 40'-0 3/4" ABOVE FIRST FLOOR FINISHED FLOOR ELEVATION (FFE) (WHICH VARIES) UNLESS OTHERWISE NOTED AS 1'-0"-0"
 THIRD FLOOR FFE IS 42'-4 1/2" ABOVE FIRST FLOOR FFE (WHICH VARIES) UNLESS OTHERWISE NOTED AS 1'-0"-0"
 FLOOR CONSTRUCTION:
 3/4" GYPCRETE ON 1/2" T&G PLYWOOD SUBFLOOR ON 18" PRE-ENGINEERED OPEN WEB WOOD FLOOR TRUSSES AT 24" o.c.
 USE SECTIONS #154 & #156 FOR ALL SLEEVED OPENINGS AND FRAMED OPENINGS REQUIRED. COORDINATE LOCATIONS WITH MECHANICAL, PLUMBING AND EQUIPMENT DRAWINGS.
 FFE — INDICATES FINISHED FLOOR ELEVATION
 T&G — INDICATES TOP OF STEEL
 EOS — INDICATES EDGE OF SLAB
 EOB — INDICATES EDGE OF DECK
 FOB — INDICATES FACE OF BUILDING
 AFF — INDICATES ABOVE FINISHED FLOOR
 L4 — INDICATES LINTEL, SEE SCHEDULE SHEET S10
 S — INDICATES STRAP BRACING, SEE SHEETS S90
 G — INDICATES GANG OF 2x STUDS, SEE 4/S10

REFER TO ARCHITECTURAL FLOOR PLAN FOR DIMENSIONS OF ALL INTERIOR WALLS SHOWN ON PLAN.
ALL THIRD FLOOR LOAD BEARING WALLS SHALL BE CONSTRUCTED USING SINGLE (1) 2x4's @ 16" o.c.

NOTE:
 OCC SHALL BE RESPONSIBLE FOR COORDINATING LOCATION OF FLOOR TRUSSES IN RELATION TO ALL MECHANICAL UNITS & DUCTWORK, PLUMBING FIXTURES & PIPING, ETC. PRIOR TO PLACING TRUSSES.

DIMENSIONING NOTE:
 DIMENSIONS SHOWN ARE TO OUTSIDE FACE OF STUD OR EDGE OF SLAB. SEE ARCHITECTURAL DRAWINGS FOR MASONRY UNITS, SIZE, TYPE, LOCATION, AND DIMENSIONS. COORDINATE ALL DIMENSIONS SHOWN WITH LATEST ARCHITECTURAL FLOOR PLANS, AND NOTIFY ARCHITECT OF ANY CONFLICTS.

WALLS IN THE CORRIDORS (ON BOTH SIDES OF THE WALLS) TO BE 2x8 INTERIOR SHEET ROCK ON 2x4x8 WALL STUDS (SPACED AS NOTED ON PLANS) WITH 60 COOLER NAILS @ 4" o.c. ALL EDGES AND STUDS AT FIRST FLOOR, 7" o.c. AT UPPER FLOORS.
 INTERIOR TENANT SEPARATION WALLS BETWEEN UNITS AND CORRIDORS SHALL BE 5/8" AIR INTERIOR SHEET ROCK ON 2x4x8 WALL STUDS (SPACED AS NOTED ON PLANS) WITH 60 COOLER NAILS @ 4" o.c. ALL EDGES AND STUDS AT FIRST FLOOR, 7" o.c. AT UPPER FLOORS.

HSPA# 1805
**BLDG #1 - PART 'A'
 THIRD FLOOR FRAMING**

SEPTEMBER 2, 2014

S4.0