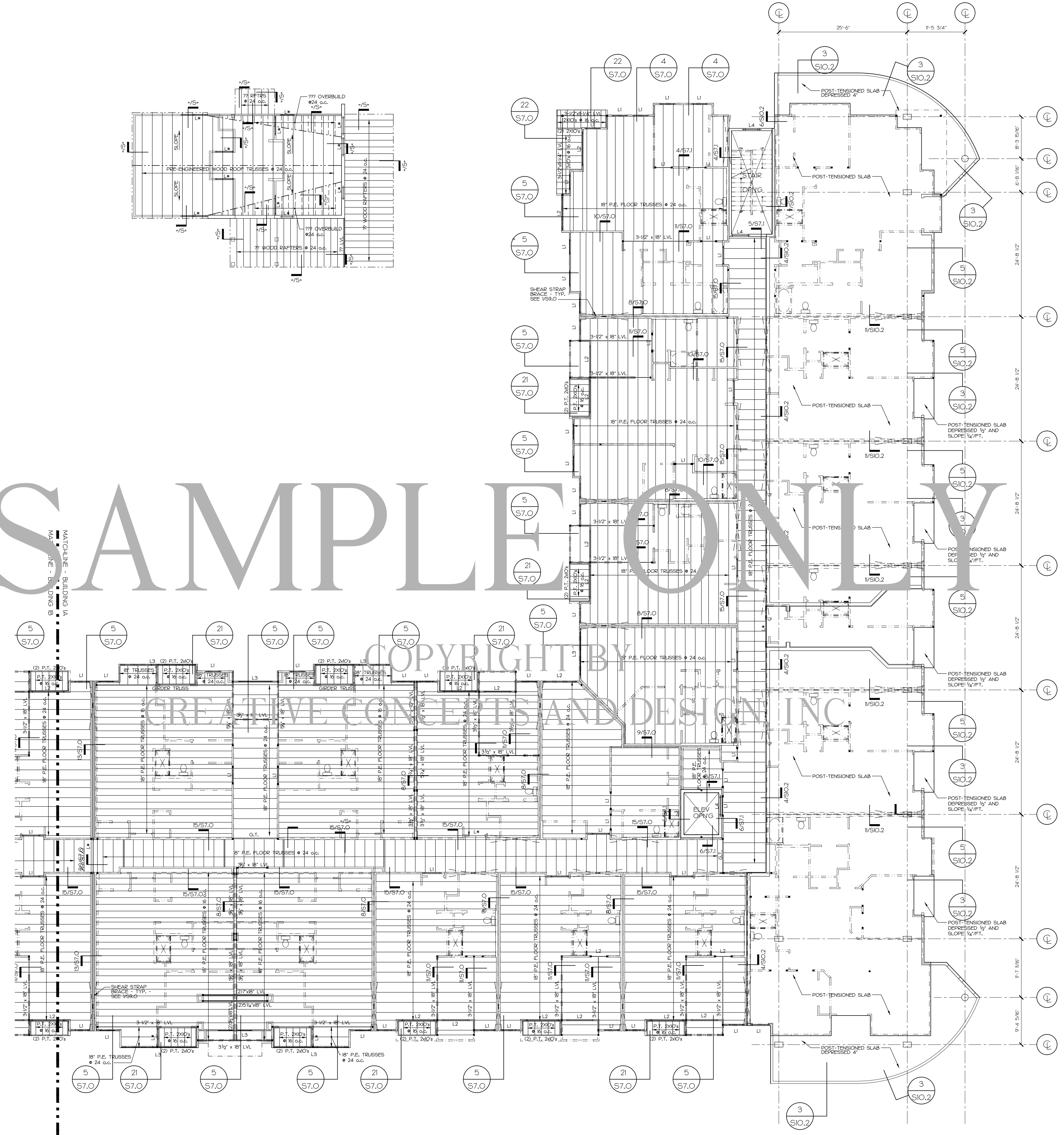


PRELIMINARY
COORDINATION ONLY
NOT FOR CONSTRUCTION

SAMPLED ONLY



SECOND FLOOR FRAMING PLAN
3/8" = 1'-0"

SECOND FLOOR FRAMING SHEET NOTES:
TRUSS BEARING ELEVATION IS 10'-11" ABOVE FIRST FLOOR FINISHED FLOOR ELEVATION (FFE) (WHICH VARIES) UNLESS OTHERWISE NOTED AS 1'-0" OR SECOND FLOOR FFE IS 10'-8 1/4" ABOVE FIRST FLOOR FFE UNLESS OTHERWISE NOTED AS 1'-0" OR
FLOOR CONSTRUCTION:
3/4" GYPCRETE ON 1/2" T&G PLYWOOD SUBFLOOR ON 18" PRE-ENGINEERED OPEN WEB WOOD FLOOR TRUSSES AT 24 o.c.
FFE — INDICATES FINISHED FLOOR ELEVATION
ST/SL — INDICATES REFERENCED FINISHED FLOOR ELEVATION
T/S/SL — INDICATES TOP OF STEEL
E/S — INDICATES EDGE OF SLAB
R/O — INDICATES EDGE OF ROOF
F/B — INDICATES FACE OF BUILDING
A/F — INDICATES ABOVE FINISHED FLOOR
F. V. — INDICATES FIELD VERIFY
L — INDICATES Lintel, SEE SCHEDULE SHEET S10
S — INDICATES GANGS OF 2x STUDS - SEE DETAILS 4/310
S/ — INDICATES STRAP BRACKETS SHEAR WALL - SEE V590 IN THE CASE OF A DOUBLE WALL, BOTH WALLS SHALL HAVE STRAP BRACKETS INSTALLED.

ALL SECOND FLOOR LOAD BEARING WALLS SHALL BE CONSTRUCTED USING SINGLE (1) 2x4's @ 16 o.c.

NOTE: CONTRACTOR SHALL BE RESPONSIBLE FOR COORDINATING LOCATION OF FLOOR TRUSSES IN RELATION TO ALL MECHANICAL UNITS & DUCTWORK, PLUMBING FIXTURES & PIPING, ETC. PRIOR TO PLACING TRUSSES.

DIMENSIONING NOTE: DIMENSIONS SHOWN ARE TO OUTSIDE FACE OF STUD OR EDGE OF SLAB. SEE ARCHITECTURAL DRAWINGS FOR MASONRY VENEER SIZE, TYPE, LOCATION, AND DIMENSIONS. COORDINATE ALL DIMENSIONS SHOWN WITH LATEST ARCHITECTURAL FLOOR PLANS, AND NOTIFY ARCHITECT OF ANY CONFLICTS.

WALLS IN THE CORRIDORS (ON BOTH SIDES OF THE WALL) TO BE 5/8" - 4x8 INTERIOR SHEET ROOF ON 2x4/2x6 WALL STUDS (SPACED AS NOTED ON PLANS) WITH 6d COOLER NAILS @ 24 o.c. ALL EDGES AND STUDS AT FIRST FLOOR, 24 o.c. AT UPPER FLOORS.

INTERIOR TENANT SEPARATION WALLS BETWEEN UNITS AND CORRIDORS SHALL BE 5/8" - 4x8 INTERIOR SHEET ROOF ON 2x4/2x6 WALL STUDS (SPACED AS NOTED ON PLANS) WITH 6d COOLER NAILS @ 24 o.c. ALL EDGES AND STUDS AT FIRST FLOOR, 24 o.c. AT UPPER FLOORS.

POST-TENSIONED SLAB FLOOR FRAMING SHEET NOTES:
FLOOR CONSTRUCTION:
PT SLAB (2nd FLOOR) FFE IS 10'-8 1/4" ABOVE RFFE 00.00'
COORDINATE MECHANICAL EQUIPMENT AS INDICATED ON PLAN. G.C. SHALL COORDINATE ALL LOCATIONS W/ SUPPLIER, PROVIDE DIMENSIONS FOR ALL FRAMED OPENINGS.
COORDINATE WITH ARCHITECTURAL PLANS FOR ALL STAIR CONNECTIONS, HAND RAILS ETC.
REFER TO PLUMBING DRAWINGS FOR SLEEVE SETTING PLAN. COORDINATE ALL EQUIPMENT LOCATIONS W/ REINFORCING.

NOTE: SEE SHEETS S35 & S36 FOR PT SLAB & WALL LOADING - COORD. ALL LOADS W/ INFO. SHOWN ON THIS SHEET.

SEE S10 FOR TYPICAL COLUMN / BEAM REINFORCING DETAILS.
SEE S18 & S19 FOR TYPICAL SLAB REINFORCING DETAILS.
SEE SHEETS S100 & S101 FOR NOTES ON POST-TENSION SLAB DESIGN.

WALLS IN THE CORRIDORS (ON BOTH SIDES OF THE WALL) TO BE 5/8" - 4x8 INTERIOR SHEET ROOF ON 2x4/2x6 WALL STUDS (SPACED AS NOTED ON PLANS) WITH 6d COOLER NAILS @ 24 o.c. ALL EDGES AND STUDS AT FIRST FLOOR, 24 o.c. AT UPPER FLOORS.

INTERIOR TENANT SEPARATION WALLS BETWEEN UNITS AND CORRIDORS SHALL BE 5/8" - 4x8 INTERIOR SHEET ROOF ON 2x4/2x6 WALL STUDS (SPACED AS NOTED ON PLANS) WITH 6d COOLER NAILS @ 24 o.c. ALL EDGES AND STUDS AT FIRST FLOOR, 24 o.c. AT UPPER FLOORS.

HSPA# 1805

BLDG #1 - PART 'A'
SECOND FLOOR FRAMING

SEPTEMBER 2, 2014

S3.0