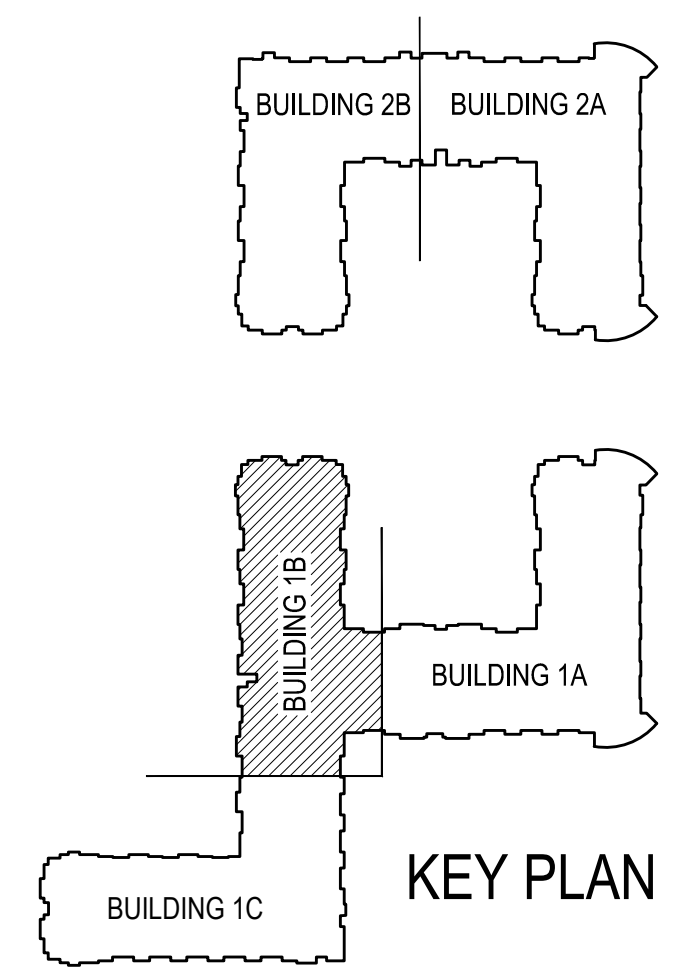
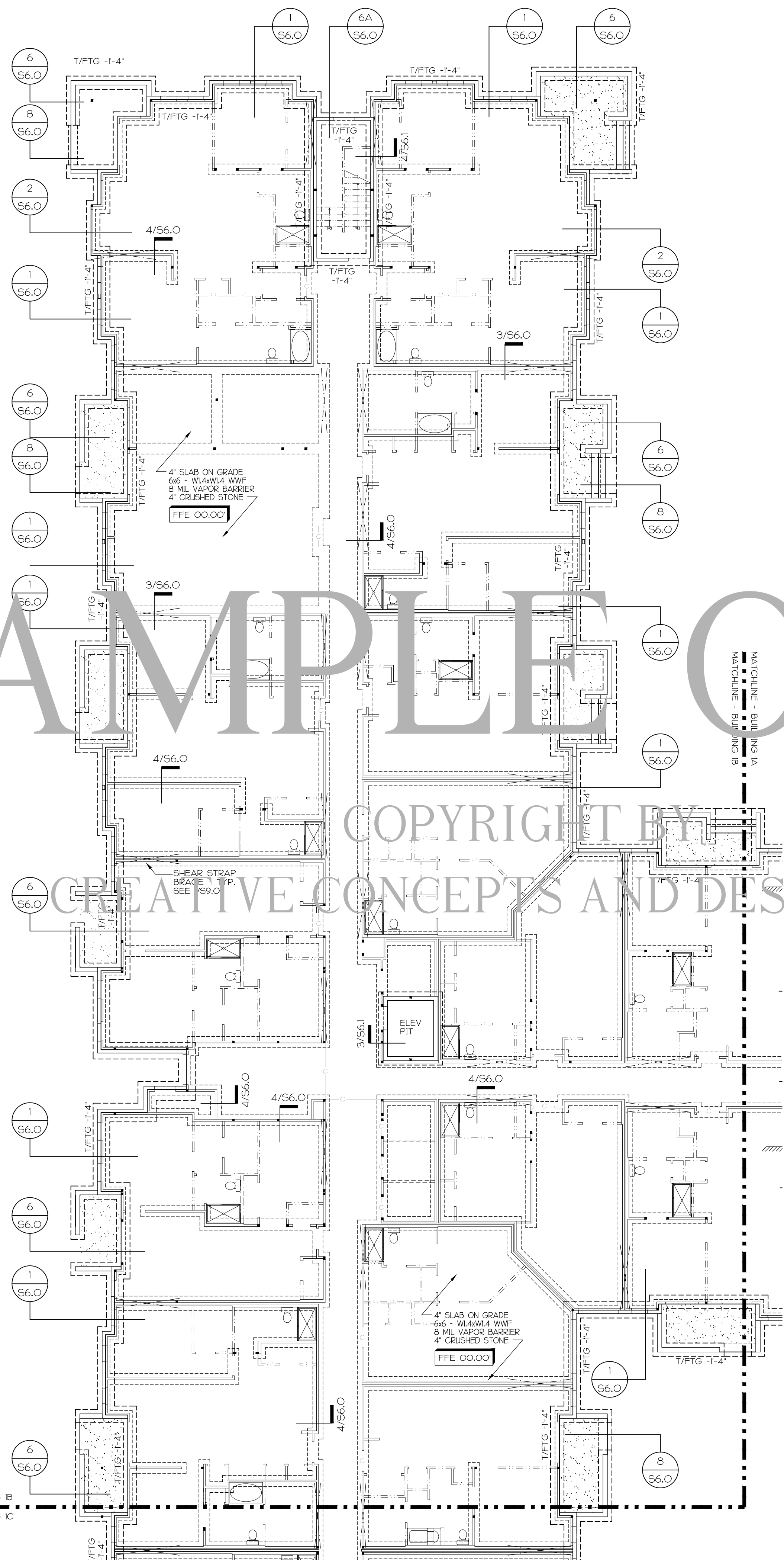


# SAMPLE ONLY



PRELIMINARY  
COORDINATION ONLY  
NOT FOR CONSTRUCTION

COPYRIGHT BY  
CREATIVE CONCEPTS AND DESIGN, INC.

**FOUNDATION SHEET NOTES:**

- REFERENCED FINISHED FLOOR ELEVATION (RFFE) IS 00.00' (\*\*\*), UNLESS NOTED OTHERWISE AS 10'-0".
- TOP OF FOOTING (T/FTG) IS MEASURED RELATIVE TO RFFE 00.00' AND IS -1'-4" UNLESS NOTED OTHERWISE AS 10'-0".
- FFE — INDICATES FINISHED FLOOR ELEVATION
- RFFE — INDICATES REFERENCED FINISHED FLOOR ELEVATION
- AFF — INDICATES ABOVE FINISHED FLOOR
- T/FTG — INDICATES TOP OF FOOTING
- EDS — INDICATES EDGE OF SLAB
- FOS — INDICATES FACE OF STUD
- C- — INDICATES SLAB CONTROL JOINT
- F. V. — INDICATES FIELD VERIFY
- (FI) — INDICATES FOOTING MARK
- (C) — INDICATES COLUMN MARK
- INDICATES SPOT ELEVATION
- INDICATES GANG OF 2x STUDS - SEE DETAIL 4/S11
- INDICATES STRAP BRACED SHEAR WALL - SEE I/S9.0 IN THE CASE OF A DOUBLE WALL, BOTH WALLS SHALL HAVE STRAP BRACING INSTALLED.
- HATCH INDICATES 4" SLAB ON GRADE w/ 6x6 - W4xW4 WWF OVER 4" CRUSHED STONE

NOTE: VERIFY ALL DIMENSIONS w/ ARCHITECTURAL DRAWINGS.

SEE SHEET S9 FOR WALL STRAP BRACING DETAILS

WALLS IN THE CORRIDORS (ON BOTH SIDES OF THE WALL) TO BE 3/8" - 4x8 INTERIOR SHEET ROCK ON 2x4/2x6 WALL STUDS (SPACED AS NOTED ON PLANS) WITH 6d COOLER NAILS @ 4" o.c. ALL EDGES AND STUDS AT FIRST FLOOR, 7" o.c. AT UPPER FLOORS

INTERIOR TENANT SEPARATION WALLS BETWEEN UNITS AND CORRIDORS SHALL BE 3/8" - 4x8 INTERIOR SHEET ROCK ON 2x4/2x6 WALL STUDS (SPACED AS NOTED ON PLANS) WITH 6d COOLER NAILS @ 4" o.c. ALL EDGES AND STUDS AT FIRST FLOOR, 7" o.c. AT UPPER FLOORS.

NOTE: COORDINATE BUILDING STEP LOCATIONS AND CHANGES IN ELEVATION WITH LATEST CIVIL AND ARCHITECTURAL DRAWINGS.

NOTE: COORDINATE ALL DIMENSIONS SHOWN WITH LATEST ARCHITECTURAL FLOOR PLANS, AND NOTIFY ARCHITECT OF ANY CONFLICTS.

NOTE: COORDINATE ALL BRICK VENEER SHOWN ON PLANS WITH LATEST ARCHITECTURAL DRAWINGS, ARCHITECTURAL DRAWINGS SHALL DETERMINE ALL BRICK VENEER TYPES, SIZES & LOCATIONS.

ALL FIRST FLOOR LOAD BEARING WALLS SHALL BE CONSTRUCTED USING DOUBLE (2) 2x4's @ 16" o.c.

**FOUNDATION PLAN**  
3/32" = 1'-0"

HSPA# 1805

BLDG #1 - PART 'B'  
FOUNDATION PLAN

SEPTEMBER 2, 2014

S2.1